



Control-unit, portable

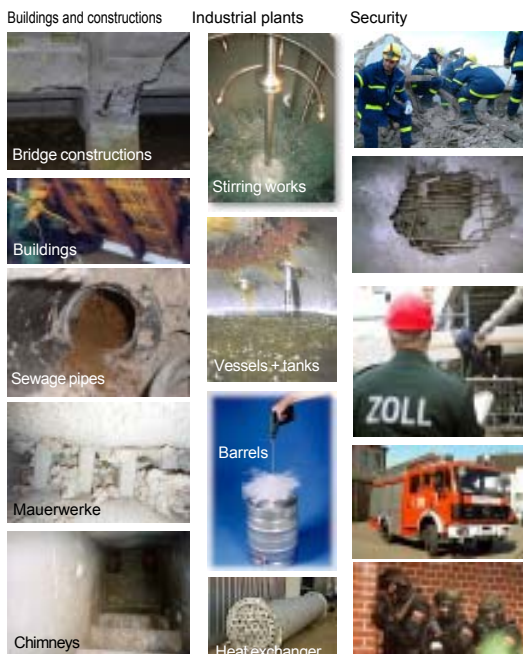


The STL-15P mobile control device is easy to transport and handle.

It has a three-member telescope handle which can be extended up to a length of 1,050 mm. The rubber-covered wheels, with a size of 140mm, run smoothly even on uneven surfaces. The substructure contains a covered small-parts compartment.

Dimensions: 465 x 210 x 355 mm

Applications:



The new video inspection system is a very powerful, portable device suitable for versatile use. It has a robust hard-shell case with integrated trolley to protect the electronic components as well as the high-resolution LCD flat screen from damage. All components are equipped with shock absorbers and safeguard top reliability even in case of strong vibrations.

Three different video probes can be adapted to the control device.



In case of mobile use, the individual video probes can also be operated with 12V battery. To this end, a portable control device is combined with an efficient battery belt.

High-resolution video glasses or small portable LCD monitors are available optionally as a display.



As a standard, both control devices are equipped with analogue video terminals for video or image recording. Fire wire or USB connection are available optionally for digital recording on a notebook.



Videoprobes:

Swivelling videohead

Swivelling videohead, pluggable, alternatively with telescop bar or aluminium pushing rods:

- * Videohead-Ø 50mm
- * Teleopic, optional with different focus lengths: -6mm,8mm,12mm
- * Remote-Focus 0-infin.
- * High intensity LED-Whitelight illumination
- * High resolution CCD-image-sensor with 440000 Pixel

Semiflex videoprobe

Robust videohead with semiflex guide-tube

- * Videohead-Ø 50mm - alternativ with Ø 30mm
- * Teleopic with 6mm
- * Fixfocus
- * High intensity whitelight LED's
- * High resolution CCD-image-sensor with 440000 Pixel

Videoprobe with LED

Flexible Videoprobe

- * Videohead-Ø 19mm
- * Wideangle optic with 3,8mm
- * Fixfocus
- * High intensity LED-Whitelight illumination
- * Automatic light-control
- * High intensity CCD-image-sensor with 440000 Pixel