

VIDEO-ENDOSCOPE SYSTEM WITH HIGH-INTENSITY XENON LIGHTSOURCE

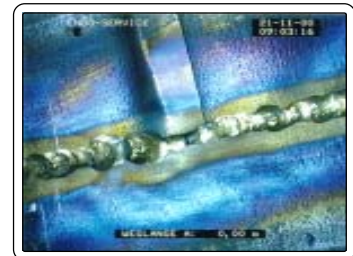
Info

The **Cobra-X** is designed to inspect piping as small as 8mm up to 1000mm I.D with different video-probes. The miniature video-probe can traverse 90° bends in piping 16mm. System Engineers and Inspection Technicians now have a cost-effective system to examine small-diameter industrial, commercial or residential water and sewer piping.

The **Cobra-X** inspection probe may be utilized in natural gas, chemical and petrochemical piping systems, or to access generators, turbines and compressors through viewports or examination fittings.



Direct-view/Fixfokus



90° side-view

Control-Unit with Notebook



Infrared remote controller for focus and motorized sideview-mirror for video-probe VSE-25SR

New lightguide-connector



Portable transport-case with handle



Videoprobe with rotating sideview-mirror

...it's more than vision

Technical highlights

- * High intensity illumination system with patent filtersystem for max. lighth-output
- * New generation flourpolymer-lightguide up to 60m length. Color temperature more than 6200K guarantee true color pictures
- * High resolution 1/4" CCD-image sensor with 440000 pixels
- * 3,8mm or 6mm miniature optical lens
- * All probes with stainless housings, sealed watertight configuration and designed for used in hazardous environments.
- * Infrared remote controller for focus rotating side-view mirror
- * Easy handling and maintenance-free system



- * Videoprobes with different diameters from 6mm-25mm
- * Directview with fixfocus or remote-focus
- * Rotatable side-view mirror - Remote-Focus
- * Videoprobes with 4-way angulation



Portable control-unit with 6,5" LCD-monitor
USB, Compact-Flash and 24 W Light-source